



## **mini** AUTO TOP OFF

Keep Water Level Stable

### Manual



---

Model

MATO-100P (With 1 Sensor)

MATO-200P (With 2 Sensors)

## Accessories

### Adapter

- ① Sensor Connector1(Black)
- ② Sensor Connector2(Black)
- ③ DC Pump Connector(Red)

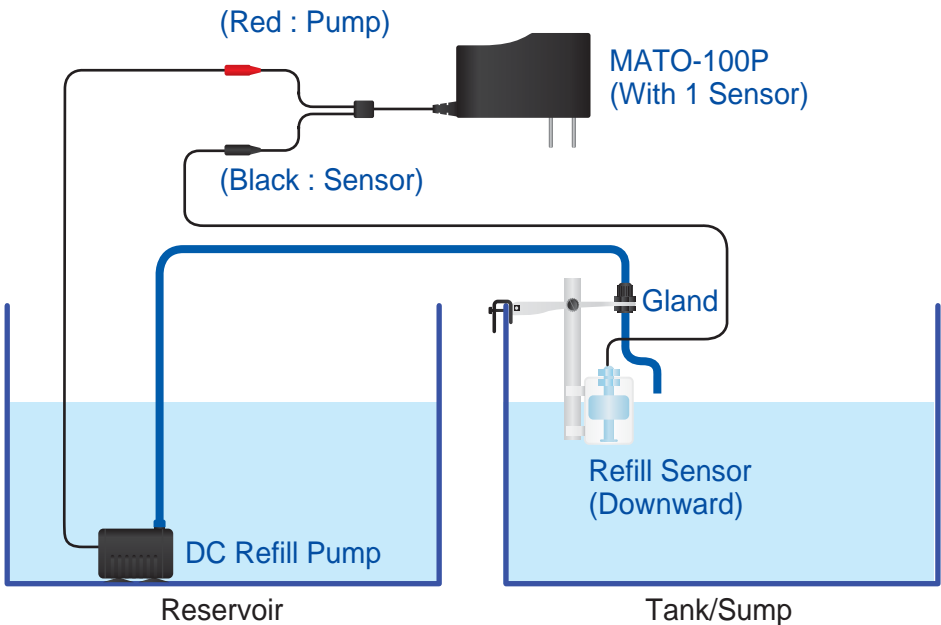


Item	Q'ty	Description
2-way Adapter	1	Power supply for MATO-100P
3-way Adapter	1	Power supply for MATO-200P
Anti-Wave Level Sensor	1	1.MATO-100P x 1
	2	2.MATO-200P x 2
Universal Holder	1	Applicable on Rimed and Rimless Tank
Extensive Tube	2	Extend the sensor level down to 40 cm
Extensive Tube Connector	1	Connect the extensive tube
Water Tube Gland	1	Fix the water tube
DC Refill Pump	1	Max Head : 200 cm
Water Tube 2M	1	Used with DC Refill Pump

## Installation

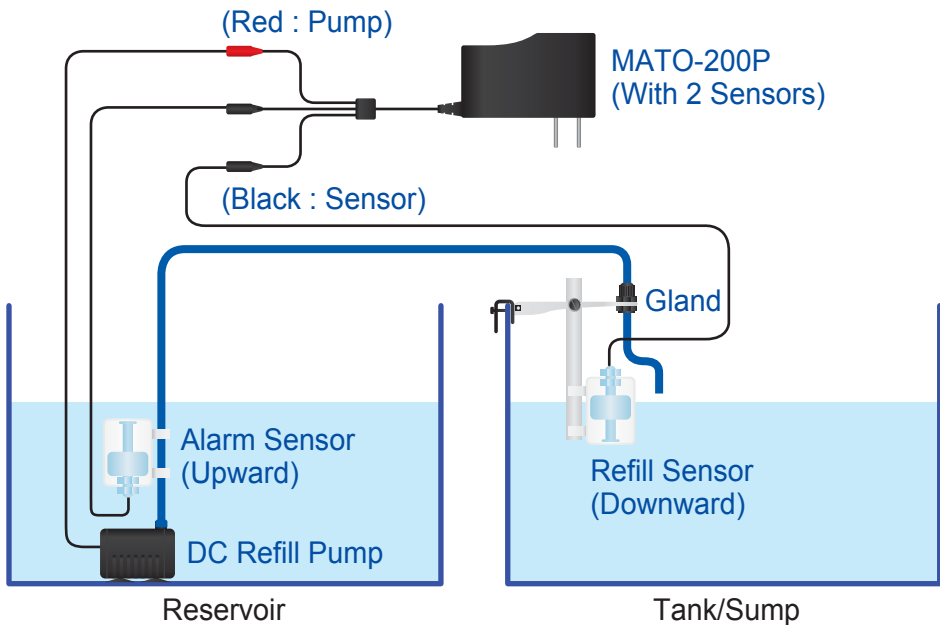
### MATO-100P (With 1 Sensor)

1. Mount the universal holder with extensive tube and gland on the Tank/Sump.
2. Connect the water tube from the pump to Tank/Sump and fixed by gland.
  - \* The "Water Tube Output" must be higher than the "Normal Level" in the Tank/Sump and "High Level" in the reservoir to avoid a siphon issue.
3. Mount the refill sensor downward on the extensive tube and position it to the water level as you require.
4. Connect the pump and sensors to the 3-way adapter.
5. Connect the adapter into an AC socket and test the operation.



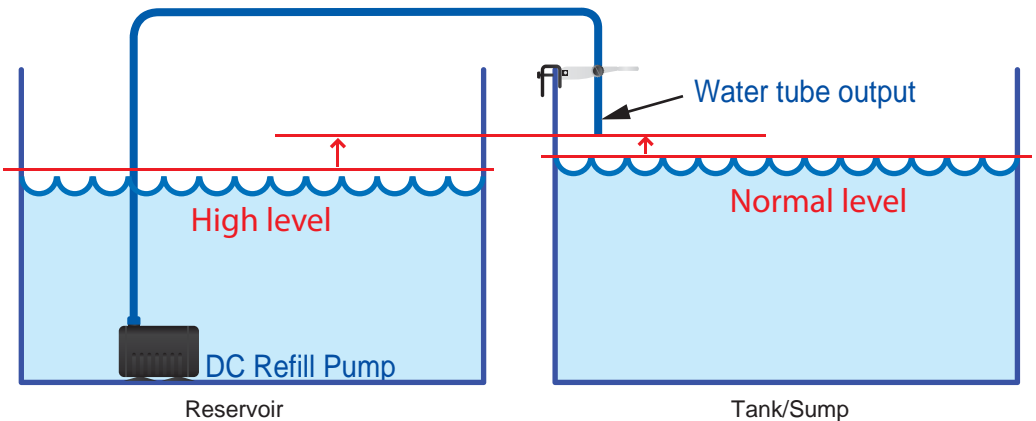
## MATO-200P (With 2 Sensors)

1. Mount the universal holder with extensive tube and gland on the Tank/Sump.
2. Connect the water tube from the pump to Tank/Sump and fixed by gland.
  - \* The "Water Tube Output" must be higher than the "Normal Level" in the Tank/Sump and "High Level" in the reservoir to avoid a siphon issue.
3. Install the level Sensors :
  - Sensor1 : Mount the refill sensor downward on the extensive tube and position it to the water level as you require.
  - Sensor2 : Mount the alarm sensor upward on the water tube near the pump.
  - \* Notice : The ATO system will not work if you only install one sensor.
4. Connect the pump and sensors to the 3-way adapter.
5. Connect the adapter into an AC socket and test the operation.

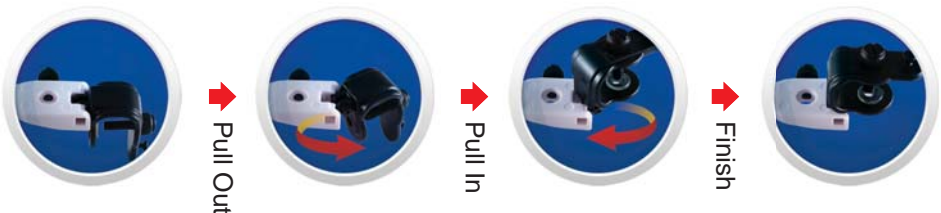


## Notice

1. Please read the manual in detail before installation
2. Keep the power adapter dry and away from water to avoid any safety issues.
3. The position of sensor should be far away from the magnet to avoid false sensing issue.
4. Please clean the sensor every 6 months to prevent the float jammed.
5. The “Water Tube Output” must be higher than the “Normal Level” in the Tank/Sump and “High Level” in the reservoir to avoid a siphon issue.



## Holder Exchange Procedure (Rimless Tank → Rimed Tank)



## Specifications

1. Power Input : 100-240VAC 50-60HZ
2. DC PUMP :
  - Head : 6.5 ft (200 cm)
  - Flow Rate : 74 gph (280 lph)

## Warranty Card

1. This product is guaranteed for one year from the date of purchased at normal operation.
2. The warranty is not transferable.
3. Any incorrect operation will not be warranted and will result in a repair fee.
4. All warranty repairs are performed by the distributor. Please contact the distributor to obtain a Return Authorization number when sending a warranted unit.
5. This guarantee is effective at the date listed on your sales receipt.

Purchased Date

(Y/M/D)

Warranty Period

One year from the purchased date

Place of Purchase

(Store name, phone, email, address)

Service

AUTOAQUA Technologies Co., Ltd.  
7F-7.,NO.229,Fuxing 2nd Rd.,Zhubei City,  
Hsinchu County,Taiwan

E-mail : [service@autoaqua.com.tw](mailto:service@autoaqua.com.tw)

<http://www.autoaqua.com.tw>