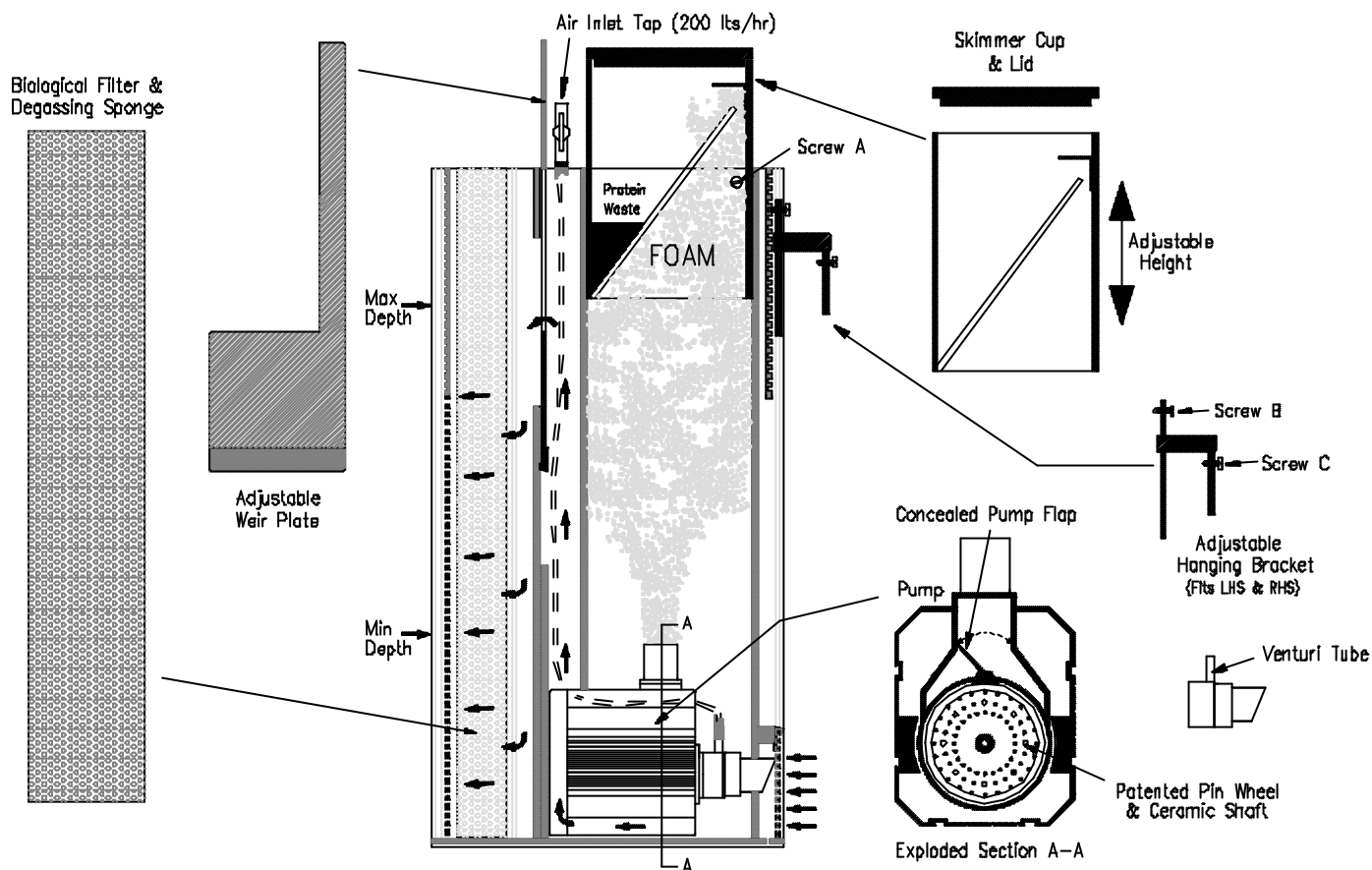


D-Deltec Multi-Compact MC500



Congratulations on buying a Deltec MC500 Protein Skimmer.

Deltec Skimmers with their Patented Pin Wheel Impellor are renowned throughout the world and are unsurpassed in their ability to mix air and water to produce the fine bubbled foam that is required for efficient foam fractionation.

The Deltec MC500 is a compact, high performance dual purpose skimmer for use inside the tank or fitted within a sump.

Installation Inside the Aquarium

The skimmer is supplied with an adjustable bracket which can be fitted to the right or left hand side of the unit and allows the height of the skimmer to be set above the water level. The skimmer housing must extend by a minimum of **80mm** above the water line as illustrated on the diagram above.

The bracket allows the unit to hang from the edge of the aquarium and is secured to the skimmer body with 2 screws (B). If the skimmer does not hang vertically within the tank, adjust screw (C) accordingly until this is achieved.

Installation Inside a Sump

The skimmer can be hung on the side of the sump as described above or can be free standing in a suitable position where it is unlikely to be knocked over. Ensure that the water intake and outlet are unobstructed.

The minimum depth that the unit should be immersed for satisfactory performance is 120mm – see diagram.

In a sump, correct setting of the weir plate is important and the air tap should be closed a little to the 2 o'clock position.

General Operation

Install the skimmer as described above and position the collection cup so that it protrudes out by 3/4 of its length. This is then held in position by screw (A). Fully open the air intake tap and connect the pump to the electricity supply.

Note: Wetting agents in the biological / degassing sponge and some plastic parts will inhibit the production of a correct fractionating foam when first operated from new. This will last for upto 48 hours and it is therefore suggested that no further adjustment is made until after this period. A similar effect may be seen if the skimmer is given a thorough clean.

The skimmer should be starting to produce a dense foam above the water level and can now be further adjusted.

- Adjust the overflow weir so that the water level within the skimmer is about 2" (50mm) below the top of the housing.
- Adjust the air intake valve to produce a fine bubble size without fine micro bubbles returning to the aquarium.
- Slide the collection cup up or down within the housing so that the initial foam is approximately level with screw (A).
- As fractionation occurs a dense yellow foam will travel further up the collection cup and be collected for disposal.
- Fine adjustment of the cup downwards will produce a wetter foam and upwards a dryer foam and darker collected material.

Maintenance

- It is advisable it stop the pump for approximately 15 minutes once every week in order to dissolve any dust or salt crystals that may have collected in the venturi tube.
- The biological/degassing sponge should be rinsed in aquarium water, (not in the tank), once every month to remove debris.
- Every 3 months the pump should be inspected and the venturi tube/pump flap cleared of any build up of calcium deposits. The tube can be cleaned by hand with a fine drill or toothpick and the pump flap by immersing that section in vinegar.

Technical Data (due to our policy of continual improvement we reserve the right to modify the product without prior notification – Dec 2002)

Dimensions 210mm x 86mm x 397mm High. – Weight approx. 3.3kg. – Airflow 200 lts/hr. – Power Consumption 15 Watts.

For further details see our web site or contact D&D aquarium solutions at one of the following numbers.

www.d-aquariumsolutions.com

Telephone. 020 8501 2492

Fax. 020 8500 9102