

© 2011 *venotec* GmbH

venotec.

GmbH

Am Nordkreuz 36
26180 Rastede
Deutschland

www.venotec.de

ENGLISH

Any claims against *venotec* in relation to the products described in this manual shall be handled exclusively as per the guarantee conditions of the manufacturer. The product specifications may deviate from the information in this manual due to technical improvements and innovations.

Valid as of: 03.02.2011

Table of contents	Page
Preface	44
Scope of delivery	45
Function description	46
Abyzz peripheral devices and connection options	47
Warnings	48
Proper use and general information	49
Installation of driver	50
Installation of pump	52
Commissioning	53
Run-in phase	53
Description of control elements	54
Operation	55
Maintenance	58
Guarantee	65
Technical changes	66
Troubleshooting	67
Disposal	68
Technical data	69
Dimensions and weight	70
Materials	72
Spare parts list	73
Appendix	47 et seq.
Test report	80

List of figures	Page	
Fig. 1a/b	Connector element and IEC connector	51
Fig. 2	IPX control and connect elements	52
Fig. 3:	Bearing straight from factory and following run-in phase	54
Fig. 4:	Overview of messages	57
Fig. 5:	Pump with pump head	59
Fig. 6a:	Loosening of impeller components	60
Fig. 6b:	Disassembling impeller components	60
Fig. 7a/b:	Removed impeller component, close-up of bearing (right)	61
Fig. 8:	Disassembly of impeller wheel	62
Fig. 9:	Rear bearing seat, guide lug, and flushing opening	63
Fig. 10:	O-ring position and assembly	64
Fig. 11a/b:	Dimensions pump A200	70
Fig. 12a/b:	Dimensions pump A400	71
Fig. 13:	Exploded drawing	73
Fig. 14:	Screw and nut	73
Fig. 15:	Flow chart 400W model	74
Fig. 16:	Flow chart 200W model	75
Fig. 17:	venotec measurement system	76

Preface

Thank you for buying an Abyzz pump! By buying this powerful product, you have acquired a highly efficient, fully variable pump that was developed and manufactured in Germany to meet the most stringent quality and performance requirements. This manual aims to help you to start using the product and to make the required settings.

In order to reap the benefits of this product for as long as possible, please read this manual carefully and observe our recommendations.

Should the quality of the product not meet your expectations, please contact the dealer who sold you the pump or contact us directly. We recommend that you use the provided form to register your product with us so that we can provide you with the best possible service. Please make sure that the **serial number** on your product remains legible and be ready to provide us with this number if asked.

Legend



This symbol indicates particularly important information.

Scope of delivery

All models are delivered with a multilingual owners manual and a registration form.

Model A200

- 1 *Abyzz A200* pump with 3m or 10m cable
- 1 *Abyzz A200* driver
- 1 *Abyzz* connecting cable (for *Abyzz* peripheral devices)
- 1 *Abyzz* mains cable

Model A200 AS

- 1 *Abyzz A200* pump with clear pump head and 3m cable
- 1 *Abyzz A200* driver
- 1 *Abyzz venturi nozzle*
- 1 *Abyzz* connecting cable (for *Abyzz* peripheral devices)
- 1 *Abyzz* mains cable

Model A400

- 1 *Abyzz A400* pump with 3m or 10m cable
- 1 *Abyzz A400* driver
- 1 *Abyzz* connecting cable (for *Abyzz* peripheral devices)
- 1 *Abyzz* mains cable

Model IPX 200

- 1 *Abyzz A200* pump with 10m cable
- 1 *Abyzz IPX 200* driver with 10m mains cable
- 1 Mounting set with 4 screw anchors, screws and distance rolls
- 1 Drill template

Model IPX 400

- 1 *Abyzz A400* pump with 10m cable
- 1 *Abyzz IPX 400* driver with 10m mains cable
- 1 Mounting set with 4 screw anchors, screws and distance rolls
- 1 Drill template

Function description

The core component of the Abyzz pump is a three-phase synchronous motor driven by sine waves. The efficiency factor of the motor is more than 90%, meaning that it is one of the most efficient motors available. Integrated bearing flushing provides optimum protection against calcination and ensures low-maintenance operations.

The materials used are designed to have a long lifetime and meet the highest requirements and quality standards. Our products are developed and manufactured in Germany. Thus, they deserve this label:

"Made in Germany"

The electronic control unit has optimum operating properties. In particular, these properties include the following:

- Variable speed range (0 - 100%)
- Programmable control unit
- Dry run protection
- Soft startup
- Bus-enabled interface*
- Lockable plug contacts
- Temperature protection
- Overcurrent protection
- Current limitation
- Low-noise operation
- Long lifetime
- Minimal power loss (especially low loss of heat into water).

* *except IPX variants*

Abyzz peripheral devices and connection options

The *Abyzz* connecting cable required for the connection of peripheral devices forms part of the scope of delivery of the pump*. If you do not use any peripheral devices, please secure both connections using the provided caps to prevent corrosion and the penetration of dust.

Abyzz control system (ACS):

The ACS allows you to control several (currently up to 8) *Abyzz* pumps. You can program in different profiles to generate waves, tides, or other flow patterns, for example.

In addition, the ACS allows you to centrally operate and monitor all bus-enabled *Abyzz* products. For example, operating data, alarms, temperatures, and so on are displayed centrally on the ACS display.

There are two D-sub connectors on the bottom of the *Abyzz A200 pump driver* for this purpose. The connection labelled "Master" is always connected in the direction of the ACS and the connection labelled "Slave" is always connected in the direction of the next *Abyzz* pump.

Abyzz interface (AInt):

The *Abyzz interface* allows you to integrate your *Abyzz* pumps into existing control systems (PLC, aquarium computer, etc.).

They simply require a 0 - 10 V output. Once the *Abyzz interface* is connected up, the internal programming of the driver is deactivated and the speed of the pump is regulated using the set direct current voltage. The pump's monitoring and protection functions and the display of operating data remain activated but the driver keyboard is deactivated.

If you are interested in this component, please contact your specialist dealer.

* *except IPX variants*



Warnings

- You must disconnect the mains plug before working on the pump!
- Caution - high voltage: It is prohibited to expose the electronic components (*Abyzz A200* driver) of the product. This must only be done by the manufacturer!
- Do not disconnect the motor supply line from the driver at any time during operations!
- Only connect parts that clearly belong together!
- Make sure that supply lines, connectors, and the driver are kept dry and protect the components from damage.
- Do not work on cabling or the driver if you have wet hands.
- Do not use the product if any of the people in the vicinity are in the water or if anyone is in contact with the water.
- Check the product for damage before use. Never use a product that you know is damaged.
- Connect Abyzz products only to a suitable, properly installed earthed wall socket that is fused with a circuit breaker as per DIN VDE 0100T739 (residual current circuit breaker).

Proper use and general information



This product is intended for the conveyance of fluids (seawater, freshwater, brackwater, chlorine water, and other non-aggressive fluids with a temperature of +2°C to +40°C. The appendix includes a list of parts that come into contact with the medium being conveyed; in the case of media not specified above, please check the compatibility of the medium being used with the specified components prior to use.

The product can convey clean water or dirty water with a particle size of up to 1mm. If using dirty water, you must regularly clean the pump and use a preliminary filter to protect it. In particular, clean the internal flushing channel. Abrasive components increase the wear rate. Resulting damage is not covered by the guarantee.

The pump is not a self-priming pump and must therefore always be installed below the water level.

Please observe all generally valid national and international requirements when installing the pump.

The maximum working pressure may not exceed 1.2 bar.

Prior to being placed into storage, the product must be thoroughly cleaned with freshwater and appropriate cleaning agents (e.g. vinegar), since otherwise residue might settle inside.

During use, please make sure that the intake duct is sufficiently protected to prevent animals or foreign objects reaching the pump and causing damage.

When laying the piping, make sure that there is sufficient compensation of temperature fluctuations in the pipes.

Use a sufficiently large pipe diameter (an internal diameter of at least 40 mm on the intake side and of at least 30 mm on the pressure side).

Installation of driver

Assembly:

Modelle A200 / A200 AS / A400

The product must not be installed outside. The mounting wall must be dry and protected from splashes of water and damp. A suitable power outlet should be available at an appropriate distance.

Modelle IPX 200 und IPX 400

The driver may be mounted outside or in wet surroundings. Please use the drill template and the mounting set for wall mounting.

Wiring:

When laying the wires, make sure that no drips of water can reach the electronics via the wires.

Please note that due to the driver switch-on current, you must not switch on multiple drivers on the same fuse at the same time. Do not use multi-socket strips and do not exceed the permitted connected load of your supply line under any circumstances.

Ambient temperatur and cooling:

The product can be used at ambient temperatures of between 2°C and +40°C.



To ensure sufficient cooling, the driver should be **at least 20 cm** away from any other objects (walls, ceilings, cable ducts, pipes etc.). The cooling element must not be covered. We recommend that you do not expose the driver to any additional heat source (heating system, lighting, sunlight) and ensure sufficient ventilation if using it in cupboards or on racks..

Electrical connection:

The Abyzz A200 requires a connection of 230V/50 -60Hz.

The component must be connected to a suitable, properly installed earthed wall socket that is fused with a circuit breaker as per DIN VDE 0100T739 (residual current circuit breaker). We recommend that you do not connect more than 4 controllers to a supply line (16A fuse).

In case a fuse needs to be replaced, replace only with same type and rating.

200 W Models 250V 2A T
400 W Models 250V 6,3A T

Model A200 (AS) / A400

The product has two separate safety fuses and a mains switch, which are located on the connector element. You must remove the IEC connector of the Abyzz mains cable before removing the fuses. The IEC connector has a lock to prevent it from falling out. Press the red lock/unlock button on the IEC plug (fig. 1b) and then pull out the plug. You can then remove the fuse drawer (fig. 1a) and replace the fuses.



Fig. 1a/b: Connector element (left) and IEC connector (right)

Modell IPX 200 / IPX 400

The product has one safety fuse and a mains switch, which are located on the bottom of the driver housing (Fig.2). You must remove the power cable from mains before removing the fuses. The fuse holder can be removed with a 90° turn with a small screwdriver counterclockwise.

Below the main switch, a pressure balance valve assures proper function and sealing in changing temperature situations.



Fig. 2: IPX control and connect elements

Installation of pump

The *Abyzz* pump can be immersed to a depth of 2 metres or installed in a dry position.*

On the intake side, make sure that the water can flow in freely and protect the intake by means of a screen suitable for keeping coarse particles, sand, filter cotton fibres etc.) away from the impeller wheel. When laying the piping, make sure that there is at least 20cm of straight pipe on the intake side to allow the water to enter on a straight course. This measurement optimizes the product's efficiency and significantly reduces noise. For even more efficiency, use sufficient pipe diameters for large pipe systems (recommended: 63mm on the intake side, 50mm on the pressure side).

When using adhesive fittings, use an adhesive suitable for ABS and PVC.

**except A200AS, which can be used only submerged*

Installation outside pond:

Find a suitable installation location where there will not be too much of a loss of power as a result of bends, corners, and the running of cables. Wherever possible, use bends instead of sharp corners and connect the pump as flexibly as possible with flexible connection parts (e.g. suitable silicone hose from a specialist dealer) in order to prevent connection line vibrations, which might result in leaks on screwed or adhesive joints over time.

These measures are optimum precautions for ensuring trouble-free, low-noise operations.

Installation in pond:

Place the pump in the filter sump and connect it to your piping system as flexibly as possible to prevent noise and vibrations.

Commissioning

Once it has been properly installed, the *Abyzz* pump can be placed into operation. To do so, connect the motor connection cable with the driver. The plug is coded and can only be connected in one position. The plug used meets the highest impermeability and safety standards. Screw the plug together to safeguard these properties. Connect the *Abyzz* mains cable with the driver, plug the mains cable into a suitable earth wall socket, and switch on the mains switch (see fig. 1a).

The LED flashes. You can start and stop the pump in any operating mode by pressing the start/stop button.

If the pump is running dry at more than a third of its output, the dry run protection function is activated. This function switches the pump off and reports a fault ("DRYRUN!"). After a few seconds, the pump starts up again automatically and, the dry run fault being rectified, begins working again.

Run-in phase

Despite our best efforts, small production tolerances cannot be avoided when manufacturing the bearings. Their condition can cause noise during the pump run-in phase. However, this is normal, and does not pose a problem in the long term. During the device test following production, the power, concentricity, and noise development of all pumps is tested. The run-in phase can last several days depending on the operating mode. Figure 3 clearly shows the difference between a bearing that has come straight from the factory (left) and a bearing following the run-in phase (right): Following the run-in phase, these operating noises practically disappear.



Fig. 2: Bearing straight from factory and following run-in phase

Description of control elements

Display:

The display tells you about the operating state of the pump. The display switches to idle mode after 3 minutes of inactivity to ensure the maximum possible lifetime and the lowest possible current consumption. Simply press a button to switch the display back on. The overview changes every 2 seconds as follows and displays the following operating data:

Stopped at:0%
Power:4W

Stopped/running and setting for power consumption

Stopped at:0%
Temp:25C

Driver temperature

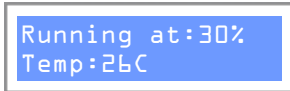
Stopped at:0%
Status:0K, #NA

Driver status and ACS adress (if given)

Stopped at:0%
Mode:Perm

Operating mode (perm, wave, random)

The text displayed in the first line changes from "Stopped" to "Running" if you increase the speed and switch on the pump:



If you are using an ACS, the current address of the driver is displayed in the overview (display of status page 15 below).

LED:

The LED flashes to show that the product is working properly.

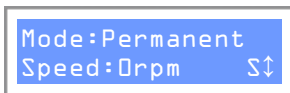
Keyboard:

The keyboard enables the direct control of the pump and the programming of the pump in the menu.

Operation

In the "Permanent" operating mode (set when delivered), you can use the start/stop button to start or stop the motor. You can adjust the speed using the up and down buttons. If you want to store the new speed permanently, press "M". The set value is then retained by the system. The start/stop setting is stored automatically so that the pump automatically starts in its previous operating mode following an interruption in the operating voltage or if the mains switch is switched off.

If you want to enter the menu to view operating data or to program the pump, press "M".



Display of operating mode
Display of current speed

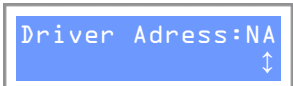
The menu appears and the current operating mode is displayed. Use the up and down buttons to navigate in the menu. The software status, operating hours, and operating mode are displayed one after the other.

 Operating for:
29h38m27s

Display of operating hours

 Software:
V1.2b0313

Display of software version

 Driver Adress:NA

ACS adress (if given, can be deleted)

If you want to change the operating mode, press the start/stop button on the operating mode display. You can now use the up and down buttons to change the operating mode. There are the following operating modes:

- a) Permanent: The pump runs continuously at a set speed.
- b) Wave: The pump switches between two different set speeds at a set interval.
- c) Random: The pump changes speed within a range defined by a minimum and maximum value at a set time.

Once you have selected the operating mode, press the start/stop button. You are then asked to enter the required data (minimum and maximum power, time interval). Confirm each setting by pressing the start/stop button. When you are finished, the settings are saved automatically and the system returns to the overview.

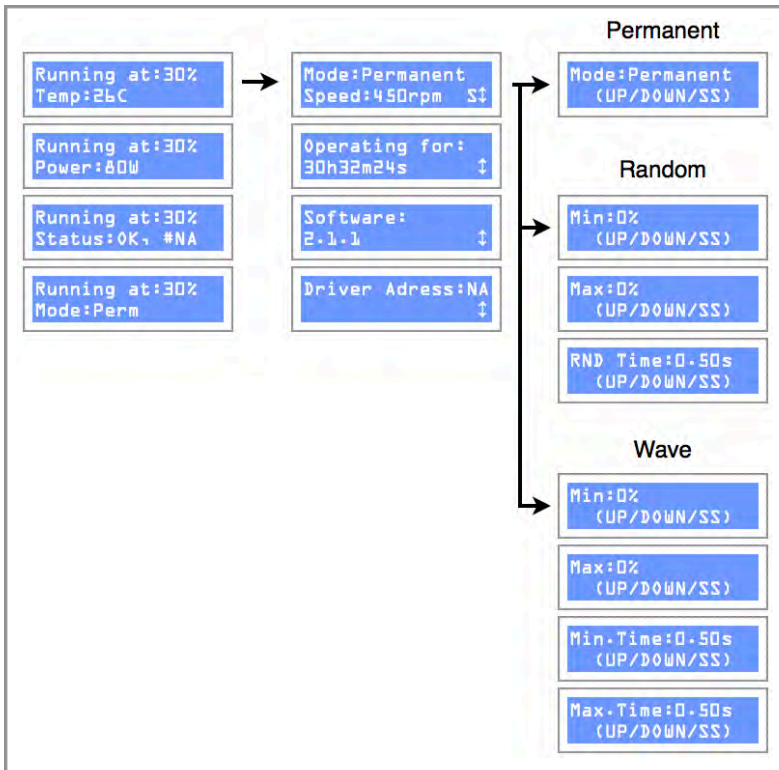


Fig. 4: Overview of messages

ENGLISH

Maintenance



Caution - extremely strong magnetic field!

- Risk of death to people with pacemakers!
- Keep the impeller away from pacemakers, credit cards, data carriers, or similar objects that are sensitive to magnetic fields.
- Risk of injury due to body parts becoming trapped.
- Do not place any metallic parts near to the impeller.

Abyzz pumps are practically maintenance-free if used properly.

If the flow rate drops, there may be particles of dirt that need to be removed in the impeller wheel. Also, slight vibrations can be an indication that the impeller wheel is dirty.

To clean it, separate the pump head from the motor (4 screws on the front, see fig. 4) and remove the impeller component from the pump housing (fig. 5a).



Fig. 4: *Pump with pump head (A200)*

ENGLISH



Fig. 6a: *Loosening of impeller components*



Fig. 6b: *Disassembly of impeller components*



Fig. 7a/b: Removed impeller component, close-up of bearing (right)

If you need to disassemble the impeller wheel, use a suitable Allen wrench to undo the retaining screw (fig. 8) and pull the impeller wheel off the shaft. This screw is made of titanium and must not be replaced by another screw.





Fig. 8: Disassembly of impeller wheel

When assembling the pump (fig. 9 and 10), please make sure that the guide lug (A) fits into the corresponding opening on the magnetic impeller plate and that the flushing opening (C) is in the right place. Make sure that the bearing (B) is in the correct position inside the motor. If necessary, push the bearing into position with a blunt object (e.g. the handle of a screwdriver). Make sure that the O-ring for the vibration isolation and sealing (fig. 10) is in the right position before reassembling the pump.

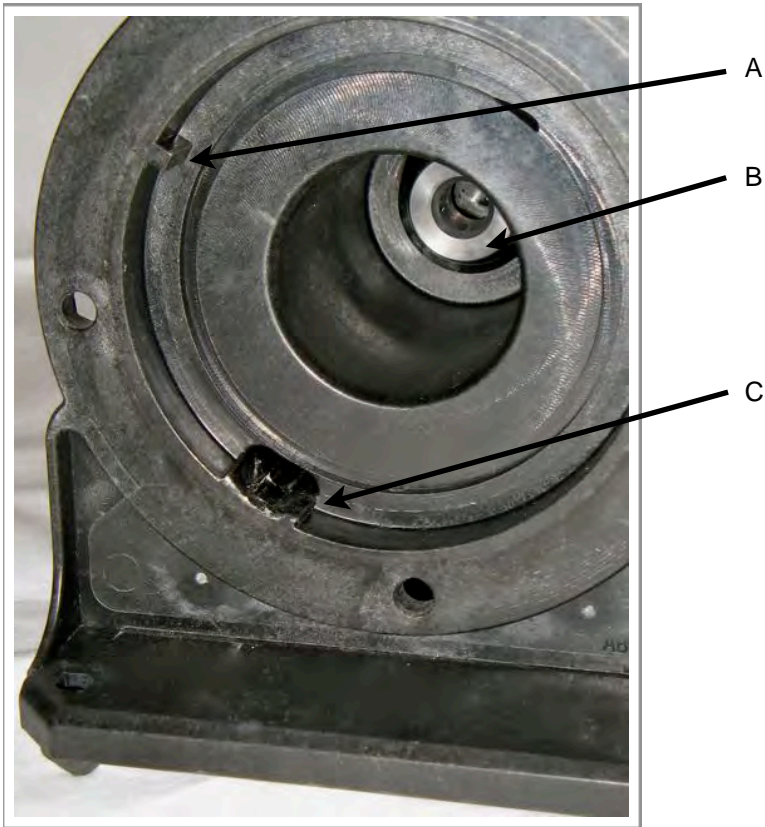


Fig. 9: Rear bearing seat, guide lug, and flushing opening

O-rings and rubber parts suffer from unavoidable aging and should be replaced as required. These parts are listed in the spare parts list and can be ordered by stating the part number.

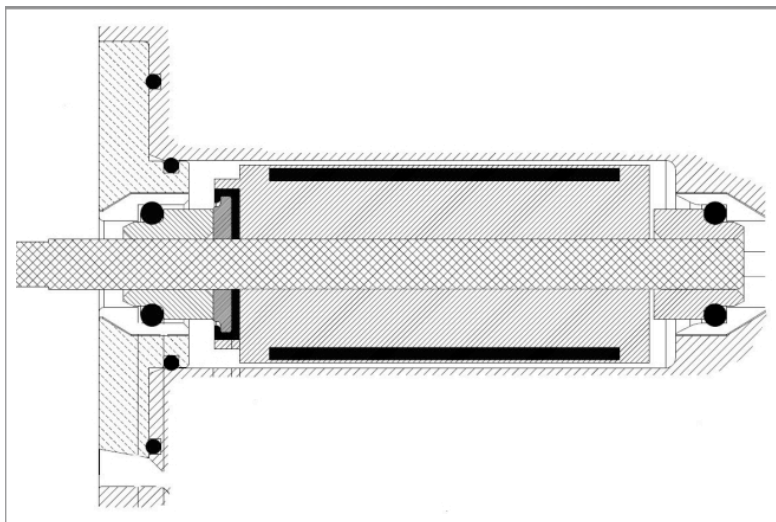


Fig. 10: O-ring position and assembly

Carefully place the impeller into the motor block and press the assembly into the bearing seat until the bearing bracket is flush with the flange.

Screw the pump head back onto the motor block. The screws must be tightened **crosswise** to create even pressure on the O-ring seal and to ensure impermeability.

In systems that are constantly and intensively subjected to limescale (e.g. hard coral ponds), the pump must be regularly descaled.

Tip:

We recommend that you use a weak vinegar solution to clean the pump to avoid damaging it.

Guarantee

In accordance with the implied warranty, we provide a 12-month guarantee.

You can also extend the product guarantee period from 12 months to 24 months free of charge within 4 weeks of purchasing the product (date of invoice) after registering your product successfully.

In addition, you can purchase an extended guarantee.

For more information, see the **provided device registration and guarantee extension form**.

If you have a complaint, please send the device back - in its original packaging wherever possible and with proof of purchase - to the specialist dealer from whom you acquired the product or directly to *venotec*.

Please note that we cannot accept non-prepaid deliveries. Such deliveries will be sent back without being processed.

The guarantee covers material, functional, and production faults that can occur when using the product as intended. It does not cover transport damage, claims for compensation above and beyond compensation for the product itself, or damage resulting from improper use, negligence, incorrect installation, or interventions and changes carried out by unauthorized persons. We expressly exclude such scenarios from our scope of liability.

Any secondary damages such as the loss of coral, fish, or water damage caused by pump failure or a lack of intake protection are expressly excluded from guarantee and warranty claims.

Calcination inside the pump and any resulting damage to the product or motor and any damage to cables (e.g. chafed cables) are expressly excluded from the warranty.

The warranty is invalidated in the following cases:

- Removed original plugs
- Use of non-original spare parts
- Impeller wheel damage resulting from parts sucked into the pump
- Motor damage caused by the tapering of the intake port or if the pump is operated with a closed or partially closed ball valve in the intake area
- Motor damage caused by persistent dry running
- Limescale damage resulting from the improper use of chemicals or the use of unsuitable chemicals
- Motor damage resulting from upstream external electronic components
- Damage resulting from damp in the driver

Technical changes

Due to the constant further development of our products and to innovations that, in particular, serve to improve quality, safety, and technical progress, the manufacturer reserves the right to make technical changes.

Troubleshooting

If, despite the high standard of quality, faults should occur, please use the checklist below to rectify or restrict the problem. A number of faults are already detected and displayed by the electronics.

Malfunction	Cause	Remedy
The display does not light up and the LED flashes	a) Screensaver on	a) Press a button
The display does not light up and the LED does not flash	a) No mains voltage b) Fuse or fuses faulty	a) Check the mains connection b) Replace the fuses If the fault cannot be rectified (e.g. if the fuses are repeatedly faulty), there is a driver fault. In this case, please contact the service team.
Status: COMM FU!	a) Control unit communications failed	a) Switch off the device and switch back on after 10 seconds
Status: Imax!	a) Overcurrent fault, motor overloaded	a) Check motor to make sure that it can move freely
Status: MOTOR?	a) Motor not detected	a) Check connection to motor, check plug
Status: TEMP!	a) Driver overheated	a) Let the driver cool down, lower the ambient temperature
Status: DRYRUN!	a) Motor has run dry or is drawing in air	a) Check the water level, check the pipes for leaks
Status: LOW VOLT!	a) Mains voltage too low b) Too many devices on one lead c) Mains lead too long	a) Check the mains voltage b) Reduce the number of devices c) Reduce the length of the lead, remove multi-socket strips <i>Device is working but cannot reach maximum power</i>

If you cannot rectify the fault by checking the lines (incorrect connections), mains voltage, and pump (smooth running, blockages), please contact your specialist dealer. In such cases, please be ready to state the serial number of the driver and of the motor. The serial numbers are on the blue serial number sticker or on the packaging.

Disposal

As per Directive 2002/96/EC, this product cannot be disposed of in normal household rubbish.

Within Germany, our customers can send old devices back to us free of charge for proper recycling or disposal. The WEEE number for reporting to the EAR (Germany registry of old electrical equipment) is:

DE 16546900

If you do not want to dispose of the product through us, you must bear the costs of disposing of the product in accordance with legal requirements. In doing so, you release us from our obligations as per Section 10 Paragraph 2 of the ElektroG (Electrical and Electronic Equipment Act) and absolve us from all upcoming claims from third parties.

Technical data

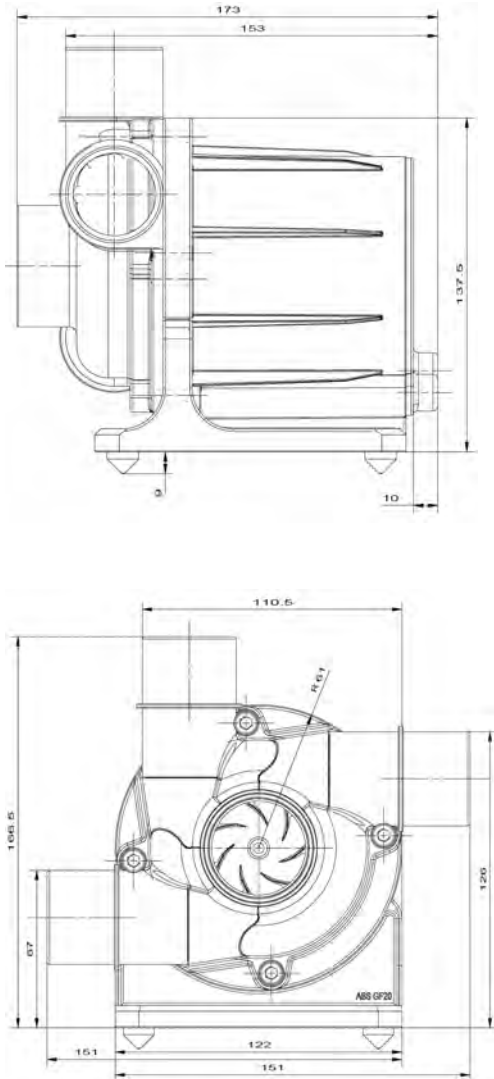
Model		200W	400W
Maximum flow rate	:	17.000 l/h	23.500 l/h
Rated flow rate	:	14.500 l/h	18.600 l/h
Discharge flow speed			
	maximum:	5,4 m/s	7,5 m/s
	rated :	4,6 m/s	6,4 m/s
Delivery height	maximum:	6,5 m	9,4 m
Rated input	:	4...200 W	4...400 W
Operating voltage	:	230V~, 50...60Hz	230V~, 50...60Hz

For details, see the characteristic curves in the appendix (fig. 15 et seq.). The measured values were determined using the test system of the manufacturer (fig. 17). The following calibrated devices were used for the measurement process:

Power test	:	Zimmer LMG 310
Quantity measurement	:	Krohne Optiflux 2100C
Discharge flow speed	:	Dorstmann P670
Pressure test	:	Kobold 220X1K9 Cl. 0,25

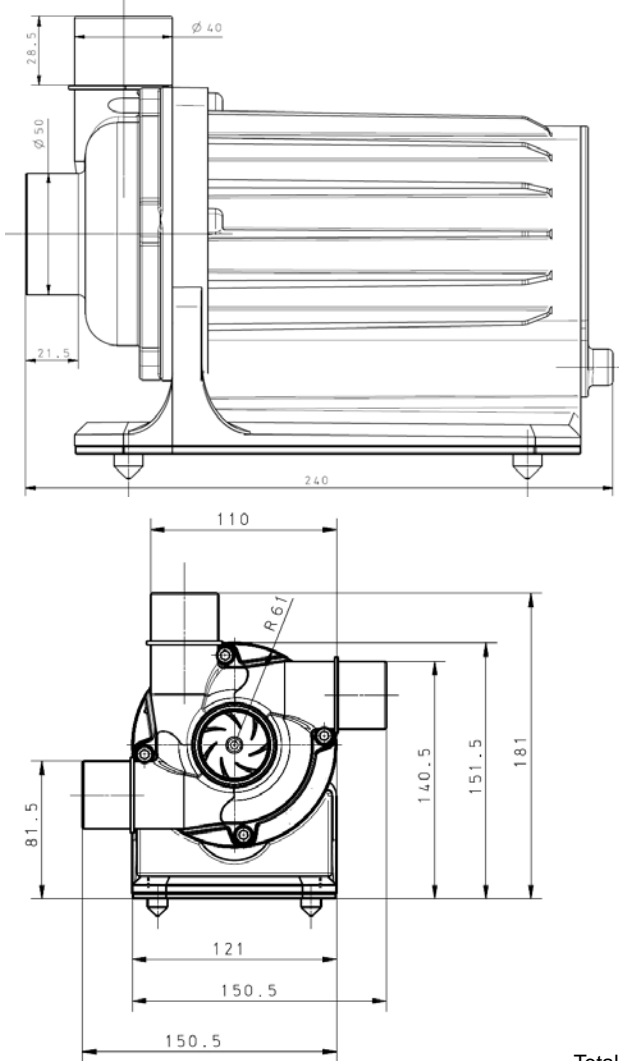
Dimensions and weight

Fig. 11a/b: Dimensions pump A200



Total shipping weight:
5,0kg

Fig. 12c/d: *Dimensions pump A400*



Total shipping weight:
7,2kg

Materials

The following components/substances come into contact with the medium being conveyed:

Housing	
Pump head	
Impeller wheel	: ABS GF 20
Flushing line	: PVC
Shaft	: WCNi
Impeller	: Titanium grade 2
Screws	: Titanium grade 2
Bearings	: SSiC
O-ring	
Bearing seat	
Device feet	: NBR, CR, EPDM
Motor cable	: PU
Jointing compound	: PU

Spare parts

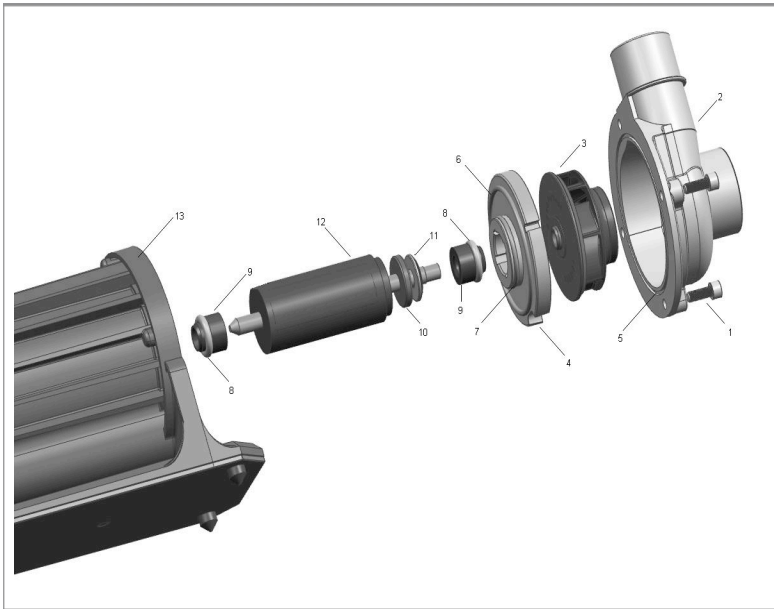


Fig. 13: Exploded drawing (top)

Fig. 14: Screw and Nut (A200, right)

- 1: Screw M6x16/Ti(4x)
- 2: Pump head
- 3: Impeller wheel
- 4: Bearing bracket
- 5: Pump head O-ring
- 6: Bearing bracket O-ring (large)
- 7: Bearing bracket O-ring (small)
- 8: Bearing seat O-ring (2x)
- 9: Bearing (2x)
- 10: Compression bearing rubber seal
- 11: Compression bearing
- 12: Rotor
- 13: Motor block (3m)
- 14: Impeller wheel screw, M4x12/Ti, (fig. 8b)
- 15: Nut, M6/Ti (4x) (fig. 8b) (only A200 models)



You can order spare parts using the part numbers specified above whenever you need them. In addition, all spare parts can be found in the customers pricelist on our website (www.abyzze.info).

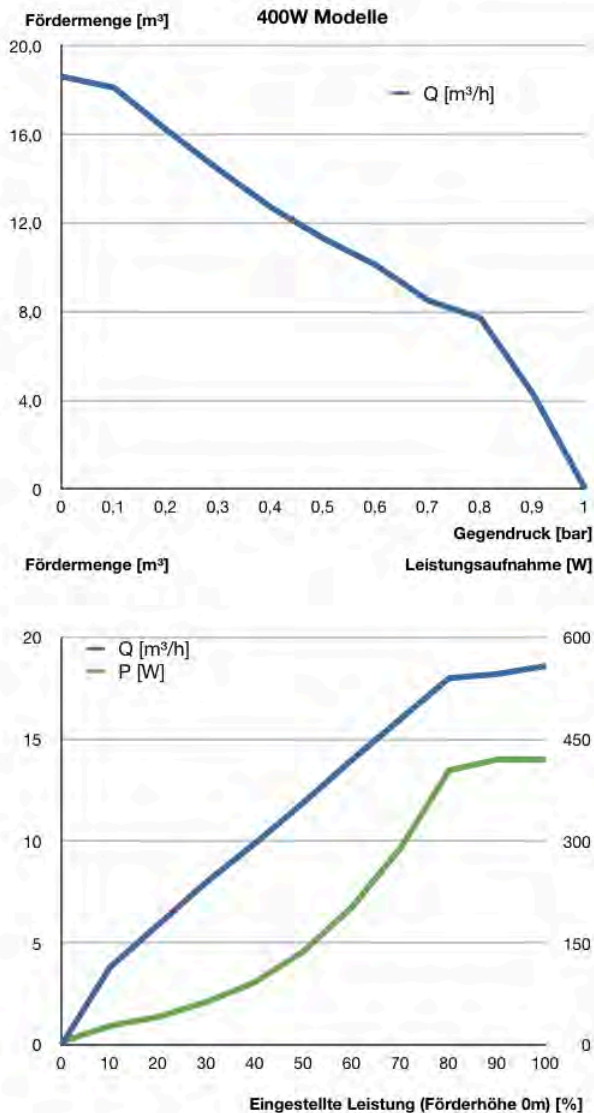


Fig. 15: Flow chart 400W models

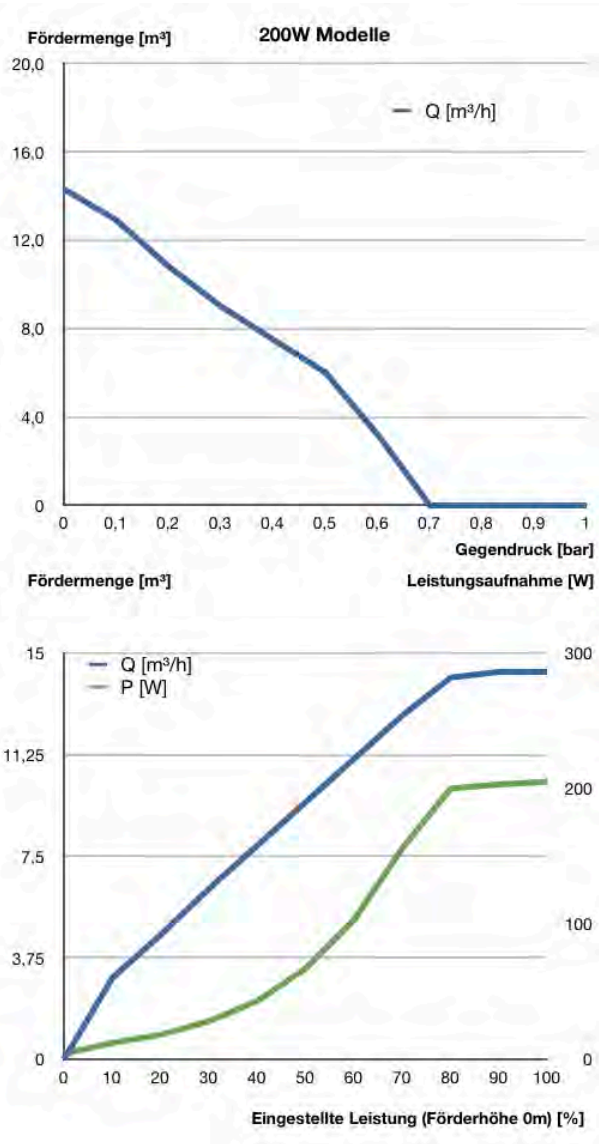


Fig. 16: Flow chart 200W models

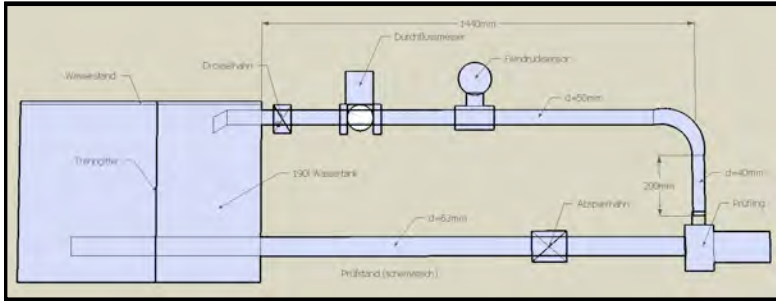


Fig. 17: venotec measurement system

CE declaration of conformityThe logo for venotec, featuring the word "venotec" in a blue, lowercase, sans-serif font. The letter "o" is replaced by a circular icon containing a gear-like pattern.

GmbH
Am Nordkreuz 36
26180 Rastede



We hereby declare that the design of the pump system

Abyzz A200, A400, A200AS, IPX200, IPX400

complies with the following specifications:

EG-Richtlinie EMV 2004/108/EG

Applied harmonized standards:

DIN EN 61000-6-1
DIN EN 61000-6-2
DIN EN 61000-6-4
DIN EN 61000-3-2

This is a EMI class A product. In some environments it can cause electromagnetic interference. In this case, it obligates to the user to perform adequate measures.

Directory of Keywords

A

Abbreviations 43
Abyzz interface 47
Abyzz control system (ACS) 47
Ambient temperature 50

B

Bearing 61
Bearing seat 63

C

CE declaration of conformity 77
COMM FU! 67
Commissioning 53
Components 73
Control elements 54
Cooling 50

D

Delivery rate 69
Dimensions 70
Display 54 et seq.
Disposal 68
DRYRUN! 67
Dry run 53

E

EMC 77
Extended guarantee 44, 65

F

Functional description 46
Fuses 51

G

Guarantee 44,65

H

I

IEC connector 51
Installation 54
Intended use 49
Imax! 67
Impeller assembly 61
Impeller wheel 62
Impeller wheel screw 61
Individual components 73

J

K

L

Limescale 64
LOW VOLT! 67

M

Magnetic field 58
Mains cable 45, 51
Mains plug 51
Mains voltage 51
Maintenance 58
Material 72
Menu 54
MOTOR? 67

N

Noise 53

O

Operating hours 56
Operating modes 56
O-ring 64

P

Particles 49

Parts list 73
Peripherals 47
Permanent 56
Piping 49, 52
Power consumption 69
Preface 44

Q**R**

Random 56
Registration 44, 65
Run-in phase 53

S

Scope of delivery 45
Serial numbers 44
Software 56

T

Technical data 69
TEMP! 67
Test bench 76
Test report 80
Troubleshooting 67

U**V****W**

Warnings 48, 49, 50, 58
Wave 56
Weight 70
Working pressure 49

X**Y****Z**